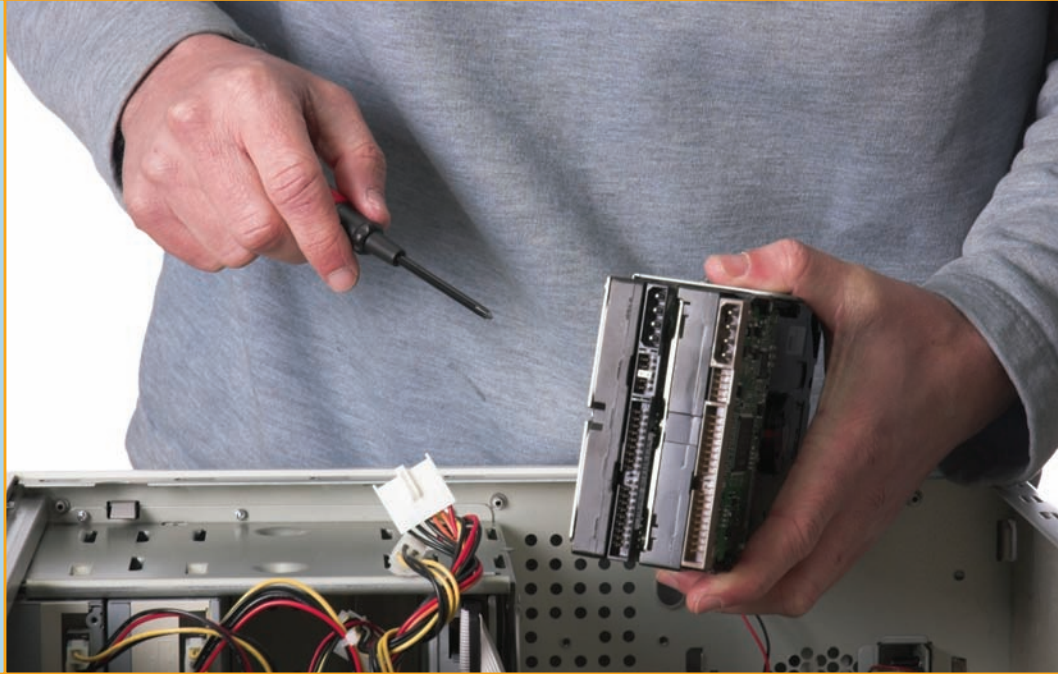


*“As no man is born an artist, so no man is born an angler.”*

—IZAACK WALTON, *THE COMPLEAT ANGLER* (1653)



**In this chapter, you will learn how to**

- Describe how computers work
- Implement a troubleshooting methodology
- Describe a technician's toolkit

**W**hen a mission-critical computer goes down, regardless of the industry, people get upset. Workers can't work, so they feel guilty. Employers can't get product out on time, so they feel anxious. Supervisors blame employees for fouling things up, or at least the employees fear such blame, even if they did not break the machine.

Into this charged atmosphere comes the tech, ready to fix the computer and move on to the next challenge. Accomplishing this task, though, requires three things: First, a good tech must know the broken machine inside and out—how it's *supposed* to work when working properly. Second, the tech has to calm the workers and supervisors, and get answers to questions to gain relevant information about the problem. Third, the tech must troubleshoot the problem and fix the machine.

This chapter starts with an overview of how computers work and then describes a proven troubleshooting methodology to help you figure out the source of problems and point you to the fix quickly. The chapter wraps up by discussing the tools every tech should have.

## ■ How Computers Work

You've spent a lot of time going through this book, reading about technologies and components in great detail. Each chapter contained troubleshooting information and methodologies for the components explained in that chapter. In Chapter 6, for example, you learned all about CPUs, from how they work to how to install them. You also learned about issues specific to CPUs, including the potentially difficult task of adding or removing the fan and heat sink assembly that all CPUs require. In Chapters 11 and 12, you dove into hard drives in gory detail. With each chapter, you added more and more information about the pieces that make up the personal computer today.

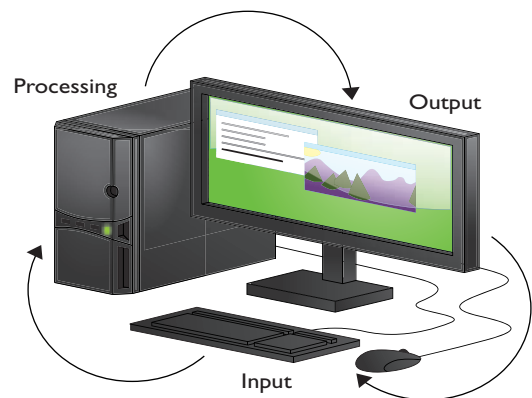
In this chapter, I want you to distill that knowledge, to think about the computer as a coherent machine. Each of the computer's components works together with all the other components to enable people to produce some amazing things.

To master the art of troubleshooting as a PC tech, you need to approach a technical problem and answer one question: "What can be causing this problem?" Because every process involves multiple components, you must understand the interconnectedness of those components. If Jane can't get the printer to print her document, for example, what could the problem be? Connectivity? Drivers? Paper jam? Slow network connection? Frozen application? Solar flares? Let's look at the process.

Way back in Chapter 3, you learned about the four parts of the computing process: input, processing, output, and storage. Let's take a moment to review the computing process, this time to see how you can use it to help you fix computers.

When you run a program, your computer goes through three of the four stages of the **computing process**: input, processing, and output (see Figure 32.1). Input requires specific devices, such as the keyboard and mouse, which enable you to tell the computer to do something, such as open a program or type a word. The operating system (OS) provides an interface and tools so that the microprocessor and other chips can process your request. The image on the monitor or sound from the speakers effectively tells you that the computer has interpreted your command and spit out the result. The fourth stage, storage, comes into play when you want to save a document and when you first open programs and other files.

Making this process work, though, requires the complex interaction of many components, including multiple pieces of hardware and layers of software. As a tech, you need to understand



• **Figure 32.1** Input, processing, and output



### Cross Check

#### Printing Process

You learned all about the printing process in Chapter 28, but now think in terms of the computing process. Does the computing process translate when applied to printers? How? If a user can't get the printer to print, how does knowledge of the computing process help you troubleshoot the printing process?



*Second Life* is a massively multiplayer online role-playing game (MMORPG) that offers a unique twist on the genre. You can create just about anything you can imagine, as far as your time and talent can take you. *Second Life* has a functioning economy that spills out into the real world, meaning you can buy and sell things within the game and turn that into real U.S. dollars, although the more common scenario is to spend real money to get virtual possessions.

all the components and how they work together so that when something doesn't work right, you can track down the source and fix it. A look at a modern program reveals that even a seemingly simple action or change on the screen requires many things to happen within the computer.

Games such as *Second Life* (see Figure 32.2) are huge, taking up multiple gigabytes of space on an Internet server. They simply won't fit into the RAM in most computers, so developers have figured out ways to minimize RAM usage.

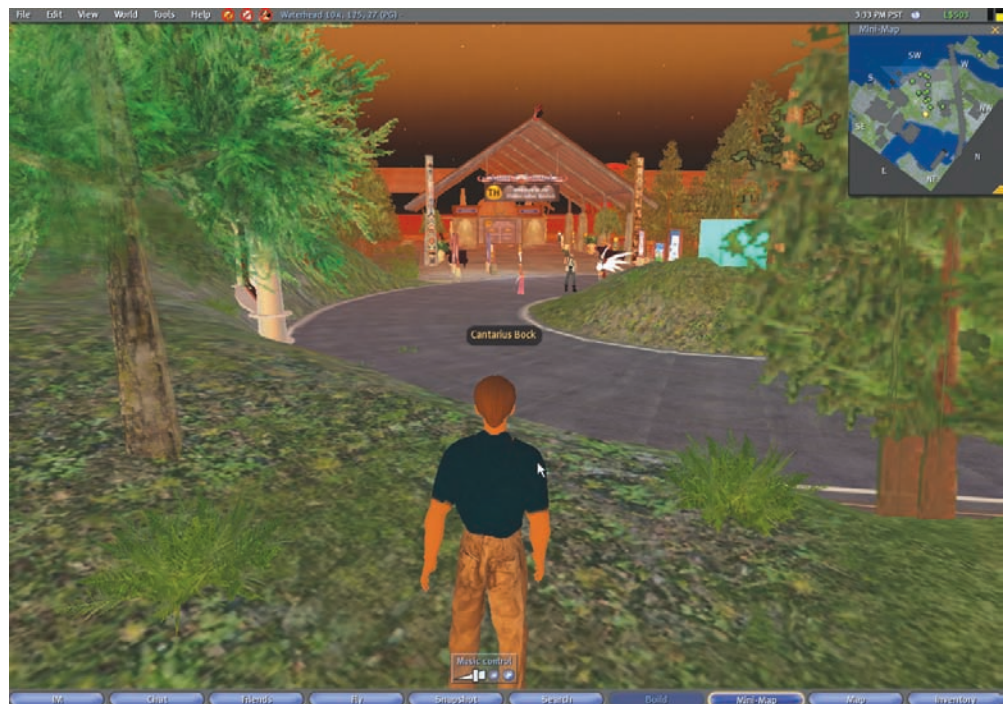
In *Second Life*, for example, you move through the online world in a series of more or less seamlessly connected areas. Crossing a bridge from one island to another triggers the game to quickly update the information you're about to see on the new island, so you won't be out of the action and the illusion of being in the game world remains intact. Here's what happens when you press the w key on your keyboard and your character steps across the invisible zone line.



## Cross Check

### Input Process

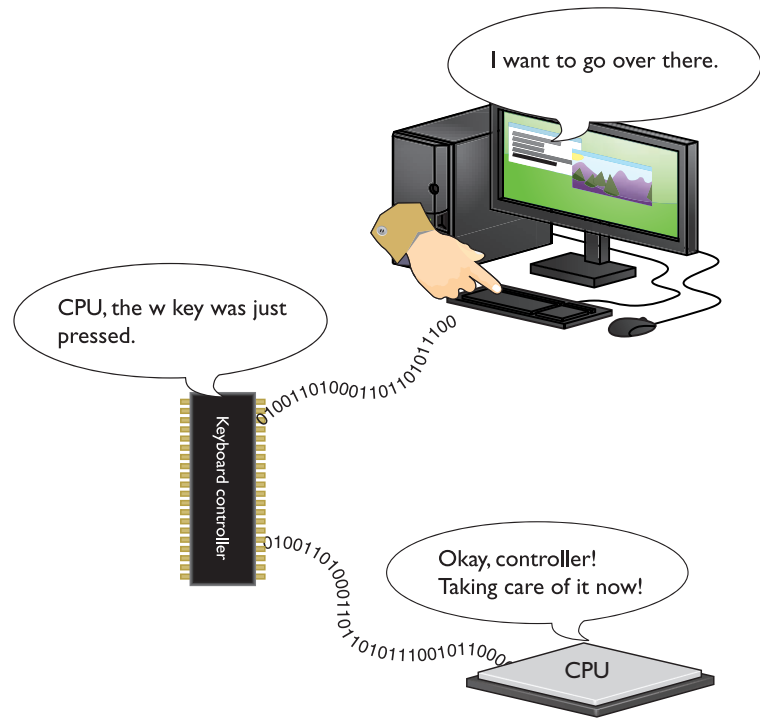
You learned about keyboards and many other input devices in Chapter 20, but now apply the computing process to input devices for troubleshooting purposes. Obviously, keyboards do the "input" part of the computing process, but what can the problem be if you press a key and nothing happens? What other input devices can you recall from Chapter 20? If they seem not to work, where in the computing process could the problem lie?



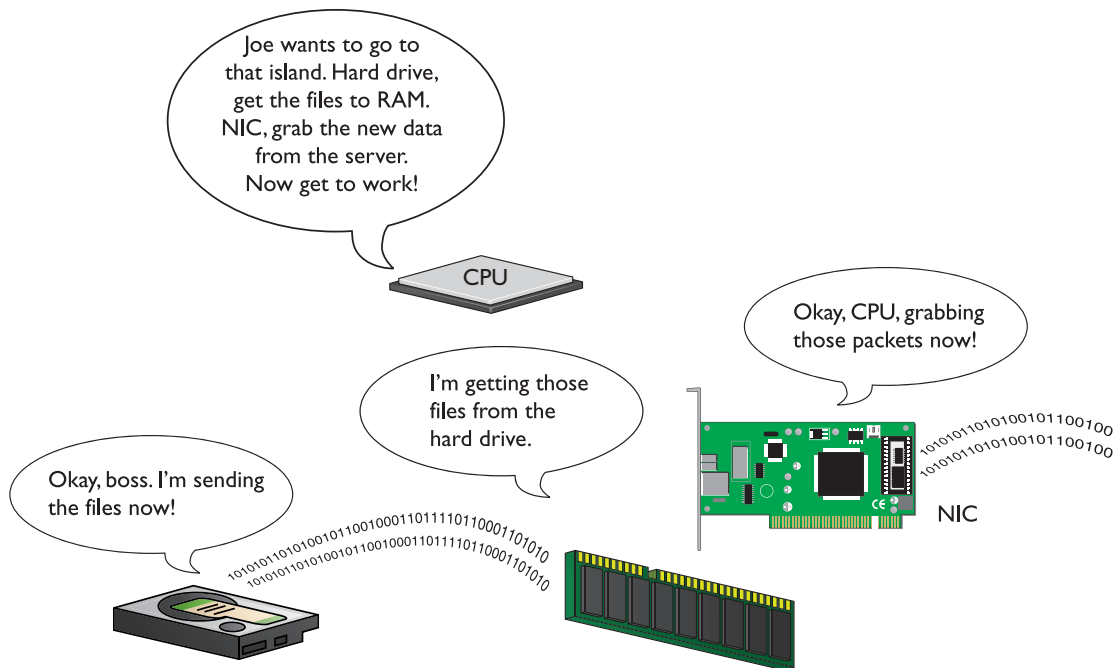
• **Figure 32.2** The *Second Life* virtual world

The keyboard controller reads the grid of your keyboard and, on discovering your input, sends the information to the CPU through the wires of the motherboard (see Figure 32.3). The CPU understands the keyboard controller because of a small program that was loaded into RAM from the ROM BIOS on the motherboard when the PC booted up.

The CPU and the application determine what should happen in the game, and on discovering that your character is about to cross the zone line, they trigger a whole series of actions. The application sends the signal to the OS that it needs a specific area loaded into RAM. The OS sends a signal to the CPU that it needs data stored on the hard drive plus information stored on the *Second Life* servers. The CPU then sends the commands to the hard drive controller for it to grab the proper stored data and send it to RAM, while at the same time sending a command to the NIC to download the updated information (see Figure 32.4).



• Figure 32.3 Keyboard to CPU



• Figure 32.4 CPU to hard drive and NIC

The hard drive controller tells the hard drive to cough up the data—megabytes worth—and then sends that data through the motherboard to the memory controller, which puts it into RAM and communicates with the CPU when it’s finished. The network card and network operating system communicate with the *Second Life* servers and download the necessary updated information. The CPU then uses the application and OS to process the new data, sending video data to the video card and sound data to the sound card, again through the wires on the motherboard (see Figure 32.5).

The video card processor puts the incoming data into its RAM, processes the data, and then sends out commands to the monitor to update the screen. The sound card processor likewise processes the data and sends out commands to the speakers to play a new sound (see Figure 32.6).

For all of this to work, the PC has to have electricity, so the direct current (DC) provided by the power supply and the alternating current (AC) provided to the power supply must both be the proper voltage and amperage.

Finally, because *Second Life* is a network application, the OS has to send information through the NIC and onto the Internet to update everyone else’s computer. That way, the other characters in the game world see you move forward a step (see Figure 32.7).



### Tech Tip

#### Video Counts

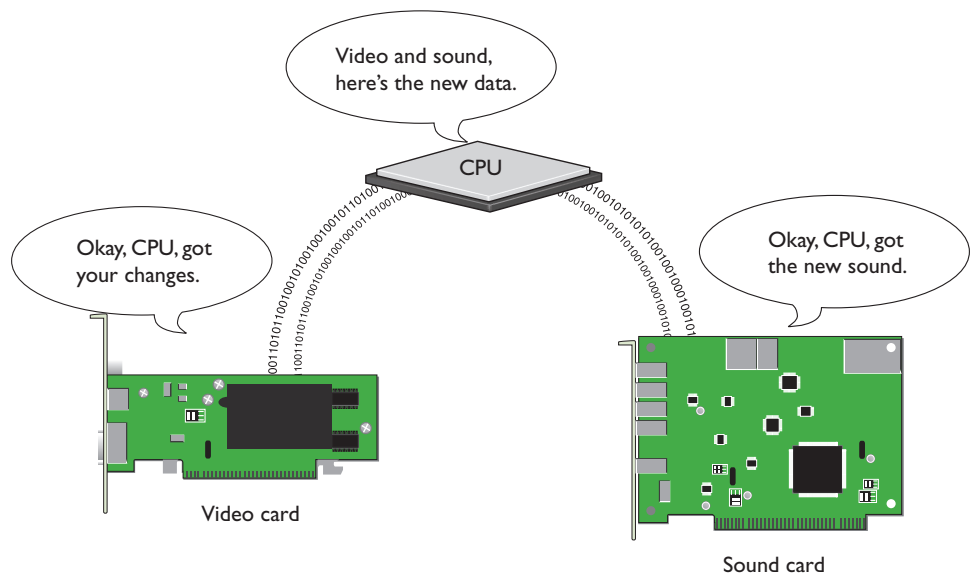
Modern Windows versions have raised the bar on video demands in a big way, so the video card in your users’ systems can make a remarkable difference in their experience. Windows Vista/7 use the video card to produce many of the cool visual effects of the interface. This means that a low-end video card in an otherwise serviceable machine can cause Vista/7 to misbehave. Unless your client is gaming, there’s no reason to drop \$300+ on a video card, but assembling or recommending a system with yesterday’s video is not necessarily a good thing!



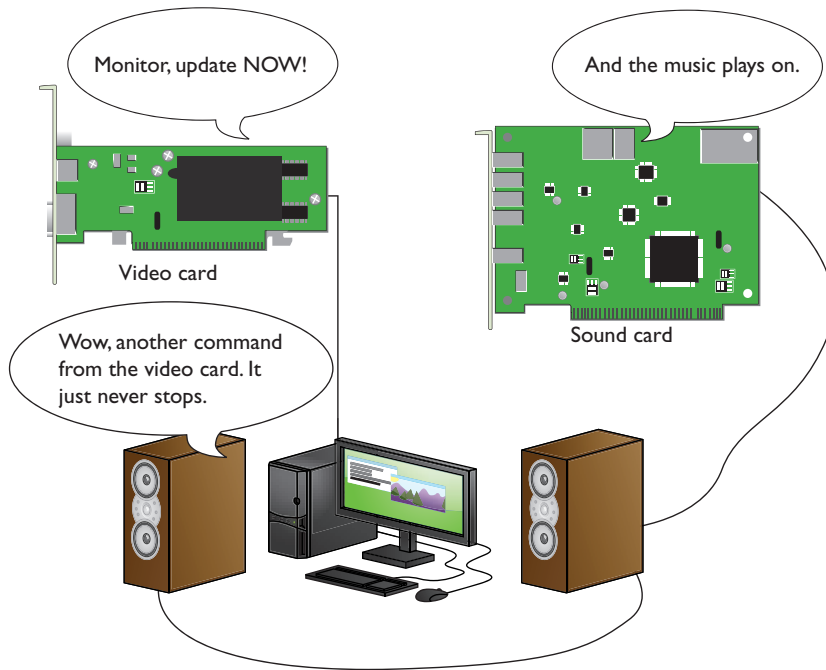
### Cross Check

#### Hard Drive Technologies

You learned about several hard drive technologies way back in Chapter 11, so turn there now and see if you can answer these questions. If an application stumbles or hesitates on the “load from the hard drive” section of the computing process, what could be the problem? Which of the available hard drive technologies offers better throughput? What would you recommend to a client who wanted to upgrade?

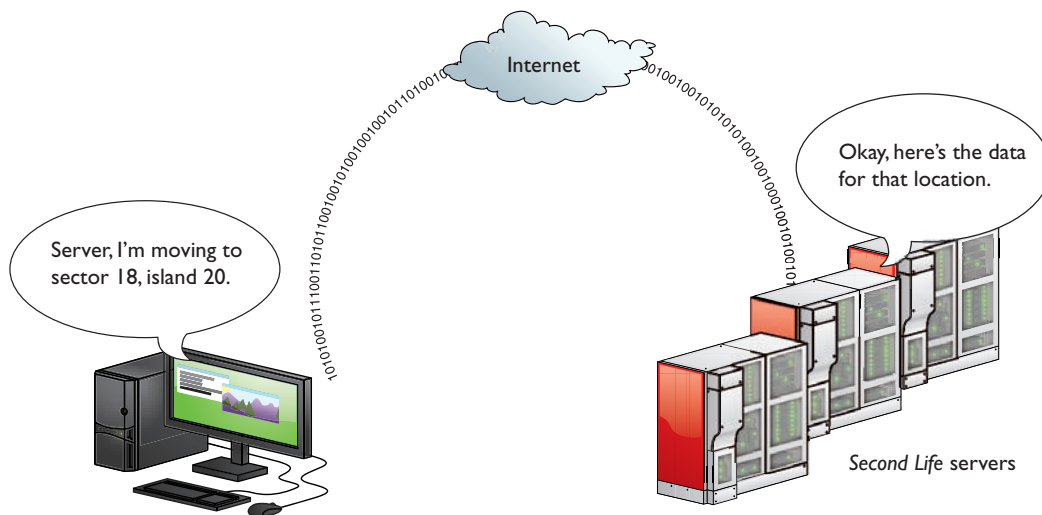


• **Figure 32.5** CPU to video card and sound card



• **Figure 32.6** Updating the screen and speakers

What do you see or hear with all these electrons zipping all over the place? Out of a seemingly blank vista (see Figure 32.8), a castle begins to appear, building itself piece by piece as your computer processes the new information and updates the video screen. You hear music begin to play from your speakers. Within a few seconds, with the data describing the new island fully downloaded and processed, the world on your monitor looks very different (see Figure 32.9). That's when all goes well. Many megabytes



• **Figure 32.7** PC to *Second Life* servers



• Figure 32.8 New area loading



• Figure 32.9 Castle completed

of data have flowed from your hard drive and across the Internet, been processed by multiple processors, and been sent to the monitor and the speakers.

To keep the action continuous and unbroken, *Second Life*, like many current online games, uses a process of continuous or **stream loading**: your computer constantly downloads updated information and data from the *Second Life* servers, so the world you see changes with every step you take. When done right, stream loading can do some amazing things. In the GameCube game *The Legend of Zelda: Wind Waker*, for example, the game anticipates where you will go next and loads that new area into RAM before you take the step. You can be in one area and use a telescope to zoom in on another fully developed area (see Figure 32.10), making the experience amazingly seamless, just like real life.

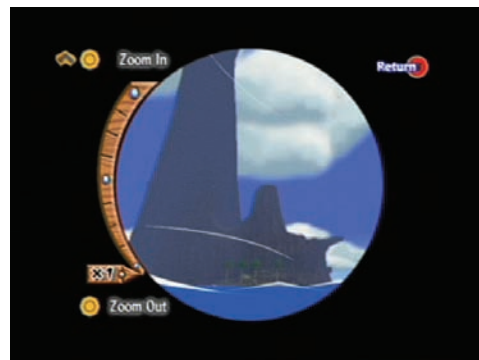
Anytime a computer has a problem that's not immediately and clearly obvious (such as not powering up due to not having a power cord plugged in), you should use the computing process to help you zero in on the problem. But the computing process only defines the pieces and their interaction; good troubleshooting requires more than just rummaging around to find the problem. You need to combine the computing process with a troubleshooting theory to get the job done.



## Try This!

### Analyze Your Apps

What applications do you use on your computer? What applications do your clients or potential clients use? Analyzing them in terms of the computing process can help elevate your troubleshooting game by a huge factor. Take for example Microsoft Excel, a program designed to let you take numbers and turn them into charts, among other things. When you sit down to work in Excel, you load it from the hard drive into memory and then input information via the keyboard and format things with the mouse. Every click requires the CPU to analyze and update RAM and the video card information.



• Figure 32.10 *The Legend of Zelda: Wind Waker* zoomed

## ■ Troubleshooting Theory

**Troubleshooting theory** is nothing more than a set of mental steps you use along with the computing process to diagnose and fix a computer. Troubleshooting theory includes talking to users to determine how and when the problem took place, determining a cause, testing, verification, and documentation. Techs use a number of good troubleshooting theories. Luckily for those taking the CompTIA A+ 220-802 certification exam, CompTIA clearly defines their vision of troubleshooting theory:

### 4.1 Given a scenario, explain the troubleshooting theory

- Identify the problem
  - Question the user and identify user changes to computer and perform backups before making changes
- Establish a theory of probable cause (question the obvious)
- Test the theory to determine cause
  - Once theory is confirmed, determine next steps to resolve problem
  - If theory is not confirmed, re-establish new theory or escalate



- Establish a plan of action to resolve the problem and implement the solution
- Verify full system functionality and if applicable implement preventative measures
- Document findings, actions and outcomes

## Identify the Problem

There's a reason you're standing in front of a computer to repair it: something happened that the user of the computer has identified as "not good" and that's why you're here. First, you need to **identify the problem** by talking to the user. Get the user to show you what's not good. Is it an error code? Is something not accessible? Is a device not responding? Then ask the user that classic tech question (remember your communication skills here!): "Has anything recently changed on the computer that might have made this problem appear?" What you're really saying is: "Have you jacked with the computer? Did you install some evil program? Did you shove in a USB drive so hard you broke the connection?" Of course, you never say these things; simply ask nicely without accusing so the user can help you fix the problem (see Figure 32.11).

In most troubleshooting situations, it's important to back up critical files before making changes to a system. To some extent, this is a matter of proper ongoing maintenance, but if some important bit of data disappears and you don't have a backup, you know who the user will blame, don't you?

If you run into a partially functional system where you might have to reinstall the OS but can access the hard drive, you should definitely back up essential data, such as e-mail, browser favorites, important documents, and any data not stored on a regularly backed-up server. Because you can boot to a copy of Windows and go to the Recovery Console or System Recovery Options, you should never lose essential data, barring full-blown hard drive death.



The CompTIA A+ certification exams assume that all techs should back up systems *every time* before working on them, even though that's not how it works in the real world.



Dead hard drives retain their data, so you can recover it—if you're willing to pay a lot of money. Having a good backup in place makes a lot more economic sense!



• **Figure 32.11** Tech asking nicely

## Establish a Theory of Probable Cause (Question the Obvious)

Now it's time to analyze the issue and come up with a theory as to what is wrong, a **theory of probable cause**. Personally, I prefer the word "guess" at this point because very few errors are so obvious that you'll know what to do. Fall back on your knowledge of the computing process to localize the issue based on the symptoms. Keep your guesses...err...theories...simple. One of the great problems for techs is their desire to overlook the obvious problems in their desire to dig into the system (see Figure 32.12).

### Outside the Case

Take a moment to look for clues before you open up the case. Most importantly, use all your senses in the process.

What do you see? Is a connector mangled or a plastic part clearly damaged? Even if that connector or part works fine, the physical abuse could provide extra information. If the user can't connect to a network, check the cable. Was something rolled over it that could have broken the thin internal wires? Is that a jelly smear near the jammed optical drive door? (No pun intended, really!) A visual examination of the external computer is important.

When you put your hand on the system unit, does it feel hot? Can you feel or hear the vibrations of the fans? If not, that would be a clue to an overheating or overheated computer. Modern computers can run when overly hot, but generally run very sluggishly. If you run through basic malware fixes and a computer still runs poorly, think about excessive heat as a potential problem.

If you spend a moment listening to the PC, you might get some clues to problem sources. A properly running hard drive (as you'll recall from Chapter 12) doesn't make a lot of sound, just a regular hum from the spinning platters. If you hear clicking or grinding sounds from a drive, that's a very bad sign and a very important clue! Excessive thrashing or disk access can likewise lead to some potential problem areas, like insufficient RAM or a badly fragmented drive.

Finally, don't forget your nose. If you smell the unmistakable odor of ozone, you know that's the smell electronic components give off when they cook or are simply running much too hot.

### Inside the Case

Use all your senses when you go inside the system unit as well. Do you see any physical damage? Check the motherboard capacitors if you have a dead PC. Properly working capacitors should be nice and (usually) blue; they definitely shouldn't look like partly melted batteries or be bulging at the seams. Fans should be spinning. The power supply shouldn't be blistering



• **Figure 32.12** Ford the Tech misses the obvious.



• **Figure 32.13** Ford the Tech is a hero!

hot. You should be able to localize sounds better with the case off. And any smell of cooking components will definitely be stronger with the case off.

As you do your inspection, both outside and inside the case, don't jump to conclusions too quickly. When you see a problem that looks obvious, stop and give yourself an "Are you sure?" moment. Consider the possibility that a problem you've seen 50 times before might *not* be the problem this time. Of course, it probably *is* the same problem, but that quick rethink might save you trouble later.

## Test the Theory to Determine Cause

Okay, so you've decided on a theory that makes sense. It's time to **test the theory** to see if it fixes the problem. The biggest challenge to fixing a computer is that the theory and the fix pretty much prove themselves at the same time. Let's go back to the situation where the power plug isn't plugged into the wall outlet. You observe that nothing happens when the PC power button is pressed. You check the back of the power supply and see that the power cable is plugged in. You then look at the wall outlet...not plugged in! So you quickly plug it in and *tada!* It works! You're a hero! In this simple case, your theory and your test are done in virtually the same move (see Figure 32.13).

Of course, most problems aren't that easy. In many cases, testing your theory does nothing more than verify that something is broken. Let's say you install an update for your video driver. You reboot, log on to Windows, and suddenly the screen freaks out. Ah, a bad video driver, right? To test, you reboot the computer and press F8 to get the boot options menu. You select VGA Mode (Windows XP) or Low Resolution Mode (Windows Vista/7) and reboot. Now the computer boots up just fine. You know what the problem is, but how do you fix it? Roll back the video driver? Reinstall an older driver? Try downloading another copy of the new driver and installing the video driver again? Any of these solutions may be the right one. Choose one and go for it (see Figure 32.14).

Uh oh, your first guess was wrong: the video is still messed up. No worries, just try another one of your theories. In most cases you'll just pick another theory and try again. But sometimes there's a point where the problem is bigger than you. It might be a problem on a server that you're not authorized to configure. It might be a problem with a user account, and techs in your company aren't allowed to change user accounts. It might be a problem with an in-house program and you don't have the skills to fix it. In these cases, you must **escalate** the problem.

Escalation is the process your company (or sometimes just you) goes through when you—the person assigned to repair a problem—are not able to get the job done. It's okay to escalate a problem because no one can fix

every problem. All companies should have some form of escalation policy. It might mean calling your boss. It might mean filling out and sending some in-house form to another department. Escalation is sometimes a more casual process. You might want to start researching the problem online; you might want to refer to in-house documentation to see if this problem has appeared in the past. (See “Document Findings, Actions, and Outcomes” later in this chapter.) You may want to call a coworker to come check it out (see Figure 32.15).

## Verify and Prevent

Fantastic! Through either your careful work or escalation, you’ve solved the problem, or so you think. Remember two items here. First, even though *you* think the problem is fixed, the user/customer might not think it’s fixed. Second, try to do something to prevent the problem from happening again in the future, if possible.

### Verify Full System Functionality

You need to **verify** full system functionality to make sure the user is happy. Let’s say a user can’t print. You determine that the printer spool is stalled due to a locked-up laser printer. You reset the printer and the jobs all start printing. Job done, right? Well, during your theory testing, you switched the default printer to another laser printer on the third floor. The user doesn’t know how to set the default printer back to the one you just fixed.

The best way to verify full system functionality is to have the user do whatever she needs to do on the repaired system for a few minutes while you watch. Any minor errors (such as incorrect default printers) will quickly become apparent, and you might learn some interesting aspects of how the user does her job. Knowing what your users do is critical for good techs to help them do their jobs better (see Figure 32.16).

### If Applicable, Implement Preventive Measures

A very smart tech once told me, “A truly good support tech’s work goal should be to never have to get out of his chair.” That’s a pretty tall order, but it makes sense to me. Do whatever you can to prevent this problem from repeating. For some problems, there are obvious actions to take, such as making sure anti-malware is installed so a computer doesn’t get infected again. Sometimes there’s no action to take at all: nothing can prevent



• **Figure 32.14** Ford the Tech takes a chance!



• **Figure 32.15** Ford the Tech asks for help from Scott.



• **Figure 32.16** Ford the Tech sticks around and watches.

a hard drive that decides to die. But you can take one more critical action in almost every case: education. Take advantage of the time with the user to informally train him about the problem. Show him the dangers of malware or tell him that sometimes hard drives just die. The more your users know, the less time you'll spend out of your chair.

## Document Findings, Actions, and Outcomes

Based on his famous quote, "Those who cannot remember the past are condemned to repeat it," I think the philosopher George Santayana would have made a great PC technician. As a tech, the last step of every troubleshooting job should be to **document** your findings, actions, and results. This documentation might be highly formalized in some organizations, or it might just be a few

notes you jot down for your own use, but you must document! What was the problem? What did you do to fix it? What worked? What didn't? The best guide to use for documentation is: "What would I have liked to have known about this problem before I walked up to it?" Good documentation is the strongest sign of a good PC tech (see Figure 32.17).

Documenting problems helps you track the troubleshooting history of a machine over time, enabling you to make longer-term determinations about retiring it or changing out more parts. If you and fellow techs fix a specific problem with Mary's machine several times, for example, you might decide to swap out her whole system rather than fix it a fourth time.

Documenting helps fellow techs if they have to follow up on a task you didn't finish or troubleshoot a machine you've worked on previously. The reverse is also true. If you get a call about Frank's computer, for example, and check the records to find other service calls on his computer, you might find that the fix for a particular problem is already documented. This is especially true for user-generated problems. Having documentation of what you did also means you don't have to rely on your memory when your coworker asks what you did to fix the weird problem with Jane's computer a year ago!

Documenting also comes into play when you or a user has an accident onsite. If your colleague Joe drops a monitor on his foot and breaks both the monitor and his foot, for example, you need to fill out an *incident report*, just as you would with any kind of accident: electrical, chemical, or physical. An **incident report** should detail what happened and where it happened. This helps your supervisors take the appropriate actions quickly and efficiently.



• **Figure 32.17** Ford documents a successful fix.

## ■ Tech Toolkit

Way back in Chapter 2, you learned the basic parts of a **tech toolkit**—a Phillips-head screwdriver and a few other useful tools, such as a Torx wrench and a pair of tweezers. Any good tech makes a point to carry around at least these tools (see Figure 32.18). Over time, you'll add more tools as your experience grows. But your toolkit won't stop at Phillips screwdrivers and Torx wrenches. You should include two other types of tools in your tech toolkit: utilities and field replaceable units (FRUs).



• **Figure 32.18** Typical technician toolkit

## Utilities

Windows comes with plenty of handy utilities, but there are times when you need to use stronger tools than these. The PC industry has thousands of third-party utilities that techs might use to diagnose and repair PCs. Sadly, there is no single selection of tools I can tell you to get: the tools one experienced tech uses differ from the tools I use based on experience, skills, and job functions. That doesn't mean you haven't been hearing my opinions! Throughout this book you've seen quite a few third-party utilities, and many of them are linked to on the media accompanying this book for you to use right away. Given that you already have my opinion on so many tools, let's instead talk about the types of third-party tools you'll find in most tech toolkits.

Many techs like to challenge me on the idea of carrying around tools. They say, "I know what I like; I'll just download them!" Well, sometimes you don't have Internet access and sometimes you need tools that are ready to go (see the next section). Granted, there are a number of tools that I would never carry on me. For example, device drivers change so often that keeping a copy on a thumb drive is a waste of time. The tools I'm listing here are the ones I promise you want with you, ready to go when you run into trouble.

### Malware Cleaners

Ask any tech who works for Best Buy's Geek Squad, "What do you spend the most time doing on jobs?" and they will reply, "Cleaning malware." The first tech utilities you want in your toolkit are malware cleaners. To truly do it right, put your malware cleaners on a bootable optical disc because malware can sometimes attack a malware cleanup tool as you install. If you're not sure what to try first, grab a copy of the Ultimate Boot CD and try some of its fine cleanup tools.

### Anti-Malware

After you clean the machine, make sure you have a copy of an anti-malware program that you can install so the user's machine doesn't get corrupted again. We talked about some of the popular freeware versions, but plenty of techs strongly prefer the pay versions and keep copies to sell to their customers.

## Boot Tools

You need a tool that's better than the System Configuration utility at controlling what programs autostart on your Windows PC. OK, in this case, one tool stands out so strongly that you have to get it: Mark Russinovich's superb Autoruns. It's vastly superior to the built-in System Configuration utility and gives you incredible control of everything that's autostarting. Sure, there are others, but I love Autoruns. Get it at the Windows Sysinternals Web site, <http://technet.microsoft.com/en-us/sysinternals>.

## Password Clearer

If you lose a Windows password, especially the Administrator password, and you can't log on to a system, you're in trouble. A number of tools let you reset any user's passwords. These programs don't let you *see* a password, only reset them, so if you have a user with encrypted folders, those won't be recoverable. None of these programs are easy to use, but when the alternative is not being able to log on, they will save you. Pretty much all of these programs run from bootable optical discs.

## ZIP File Tool

Windows can read many compressed file formats (such as ZIP), but so many others are in use that it's often a good idea to have a third-party utility handy. I like 7-Zip ([www.7-zip.org](http://www.7-zip.org)), but there are plenty of equally popular alternatives.

## Backup

Odds are good that from time to time you'll need to do a backup for a system. I keep an external hard drive with a backup tool so I can go in fast and make backups of the most critical files.

## Don't Forget Your Thumb Drives!

I guess I'm showing my age when I talk about putting all these tools on optical media. Sorry, I'm old. Almost all of these tools work equally well on USB thumb drives. I keep my tools on optical media because I still run into the occasional system that doesn't have CMOS settings for a bootable thumb drive.

## Field Replaceable Units (FRUs)

Always carry several **field replaceable units (FRUs)**—a fancy way to say *spare parts*—when going to a job site or workstation. Having several known good components on hand enables you to swap out a potentially bad piece of hardware to see if that's the problem. Different technicians will have different FRUs. A printer specialist might carry a number of fusers, for example. Your employer will also have a big effect on what is an FRU and what is not. I generally carry a couple of RAM sticks (DDR, DDR2, and DDR3), a video card, a NIC, and a 300-watt power supply.



The CompTIA A+ exams expect you to know that FRUs are computer components such as cards, memory, hard drives, processors, or power supplies that can be easily replaced in the field.

# Chapter 32 Review

## ■ Chapter Summary

After reading this chapter and completing the exercises, you should understand the following about working as a tech.

### **Describe how computers work**

- Good techs must know how their systems are supposed to work when working properly, must be able to calm workers and supervisors and get answers to relevant questions, and must be able to troubleshoot and fix computer problems. A question you must be able to answer is, “What can be causing this problem?”
- When you run a program, computers work through three stages of the four-stage computing process: input, processing, and output. Input requires special input devices such as a keyboard or mouse. The operating system provides the interface and tools so the CPU and other chips can process requests. The output devices, such as the monitor, speakers, and printer, tell you the computer has interpreted your commands. For all this to work, the PC must have electricity and proper AC/DC voltage and amperage.
- When you press a keyboard key, the keyboard controller reads the grid of your keyboard, discovers your input, and then sends the information to the CPU. The CPU understands the keyboard controller because of a small program that was loaded into RAM from the ROM BIOS on the motherboard when the PC booted up.
- Good techs understand the components involved in inputting, processing, and outputting, including the devices that store data, such as hard drives.

### **Implement a troubleshooting methodology**

- The first step in fixing a computer problem is to identify the problem by talking to the client. To determine what the computer is doing or not doing, first allow the client to describe the situation; then ask leading questions to elicit answers, such as “Has anything recently changed on the computer that might have made this problem appear?”

- Once you have ascertained the problem the user is having with the computer, it is important to back up critical data. Unless the hard drive is dead, you should have no reason to lose any data that was accessible before.
- Once you have secured the user’s data, you need to establish a theory of probable cause. In other words, look at the machine and determine why it’s not working correctly. Don’t overlook the obvious, such as a disconnected power or network cable. Use all of your senses: look for damaged components; feel for excessive heat or lack of vibration; listen for any unusual or telltale sounds; and sniff the air for the unmistakable smell of ozone.
- If you run into something more complex than a disconnected cord, don’t be afraid to try multiple solutions. Take a chance and see if it works. If you have run out of ideas, escalate the problem; no one person can solve all problems.
- After you have successfully solved the user’s problem, have the user sit down and perform the task. This enables you to verify full system functionality with the user.
- Once everything is verified and the customer is happy, make sure to document your findings thoroughly. Keeping records is important. If you or a colleague encounters a similar problem in the future, the answer will be readily available.

### **Describe a technician’s toolkit**

- Troubleshooting is more art than science, and as such, there is no step-by-step list of actions to follow. You need to be flexible.
- A well-stocked tech toolkit consists of a Phillips-head screwdriver, flat-head screwdriver, Torx wrench, nut driver, tweezers, grabber tool, flashlight, magnifying glass, and anti-static wrist strap. You should also carry several FRUs. Which FRUs you carry will depend on what kind of tech you are, but the FRUs most techs should carry include a few sticks each of DDR, DDR2, and DDR3 RAM, a video card, a NIC, and a 300-watt power supply.



- Malware is the most common source of consumer computer problems today. Make sure your toolkit is well stocked with anti-virus and other (preferably boot-time) malware removers.
- Lost logon passwords are a common problem, so your kit should include some form of password

clearing utility. Remember, these just clear the existing password; they do not show it to you.

- Other handy tools to have are zip/archive extractors and backup utilities. Having these and the rest of your kit and a handy bootable thumb drive can make your job much easier onsite.

## ■ Key Terms

**computing process** (1199)

**document** (1210)

**escalate** (1208)

**field replaceable unit (FRU)** (1212)

**identify the problem** (1206)

**incident report** (1210)

**stream loading** (1205)

**tech toolkit** (1211)

**test the theory** (1208)

**theory of probable cause** (1207)

**troubleshooting theory** (1205)

**verify** (1209)

## ■ Key Term Quiz

Use the Key Terms list to complete the sentences that follow. Not all terms will be used.

1. A “spare part” you carry with you, such as an extra stick of RAM or a video card, is called a(n) \_\_\_\_\_.
2. A Phillips-head screwdriver and a few other useful tools should be in your \_\_\_\_\_.
3. Understanding the \_\_\_\_\_ enables you to troubleshoot problems more efficiently.
4. When asking questions to \_\_\_\_\_, remember to use a nonaccusatory tone.
5. Better online applications use \_\_\_\_\_ to download updated information and data constantly.
6. Once you have determined the problem with the machine and come up with probable causes, you should \_\_\_\_\_.
7. Once you have successfully repaired the machine, it is important to \_\_\_\_\_ with the user that everything is working correctly.
8. If you can’t solve a troubleshooting problem, the next step is to \_\_\_\_\_ the problem to a higher-level tech.
9. A(n) \_\_\_\_\_ is your guess at what is wrong with the machine.
10. A(n) \_\_\_\_\_ gives the details about an accident on the job site.

## ■ Multiple-Choice Quiz

1. At what point during a repair should you escalate the problem?
  - A. After the user describes the first problem
  - B. As soon as you understand the problem
  - C. As soon as you have a solution
  - D. When you have tried all your theories and still can’t resolve the problem
2. While working at the help desk, you get a call from a distraught user who says she has a blank screen. What would be useful follow-up questions? (Select two.)
  - A. Is the computer turned on?
  - B. Is the monitor turned on?
  - C. Did you reboot?
  - D. What did you do?

3. While working at the help desk, you get a call from Sharon in accounting. She's lost a file that she knows she saved to her hard drive. Which of the following statements would direct Sharon to open her My Documents folder in the most efficient and professional manner?
  - A. Sharon, check My Documents.
  - B. Sharon, a lot of programs save files to a default folder, often to a folder called My Documents. Let's look there first. Click on the Start button and move the mouse until the cursor hovers over My Documents. Then click the left mouse button and tell me what you see when My Documents opens.
  - C. Probably just defaulted to My Docs. Why don't you open Excel or whatever program you used to make the file, and then open a document, and point it to My Documents.
  - D. Look Sharon, I know you're a clueless noob when it comes to computers, but how could somebody lose a file? Just open up My Documents and look there for the file.
4. What tool should be in every technician's toolkit?
  - A. Pliers
  - B. Hammer
  - C. Flat-head screwdriver
  - D. Phillips-head screwdriver
5. Al in marketing calls in for tech support, complaining that he has a dead PC. What is a good first question or questions to begin troubleshooting the problem?
  - A. Did the computer ever work?
  - B. When did the computer last work?
  - C. When you say "dead," what do you mean? What happens when you press the power button?
  - D. What did you do?
6. While working at the help desk, you get a call from Bryce in sales complaining that he can't print and that every time he clicks on the network shared drive, his computer stops and freezes. He says he thinks it's his hard driver. What would be a good follow-up question or statement?
  - A. Bryce, you're an idiot. Don't touch anything. I'll be there in five minutes.
  - B. Okay, let's take this one step at a time. You seem to have two problems, one with printing and the second with the network shared drive, right?
  - C. First, it's not a hard *driver*, but a hard *drive*. It doesn't have anything to do with the network share or printing, so that's just not right.
  - D. When could you last print?
7. Phoebe's computer was recently updated during the companywide patch push. Now all Phoebe gets is a black screen. What should you check first?
  - A. Take the monitor back to the maintenance room and check it with known good hardware.
  - B. Check to make sure the monitor is properly plugged into the system unit and is getting power.
  - C. Replace Phoebe's video card.
  - D. Take Phoebe's computer back to the maintenance room and reimage it.
8. You've just installed new printer drivers into Roland's computer for the big networked laser printer. What should you do to complete the assignment?
  - A. Document that you installed new printer drivers.
  - B. Tell Roland to print a test page.
  - C. Print a test page and go to the printer to verify the results. Assuming everything works, you're finished.
  - D. Print a test page and go to the printer to verify the results. Document that you installed new printer drivers successfully.
9. After examining Paul's computer, you think the problem has something to do with his video card but you are not certain. Should you try your uncertain fix, escalate the problem, or do something else?
  - A. Escalate; you need to be 100 percent correct before you attempt a fix.
  - B. Stall for time and hope the problem fixes itself.

- C. Calmly explain to Paul that his computer cannot be fixed.
  - D. Take a chance and try your first guess.
10. Upon responding to a coworker's request for help, you find her away from her desk and Microsoft Excel on the screen with a spreadsheet open. How do you proceed?
- A. Go find the coworker and ask her to exit her applications before you touch her computer.
  - B. Exit Excel, save changes to the document, and begin troubleshooting the computer.
  - C. Exit Excel without saving changes to the document and begin troubleshooting the computer.
  - D. Use the Save As command to save the file with a new name, exit Excel, and begin troubleshooting the computer.
11. You have been working all afternoon on a user's workstation and you have finally fixed the user's problem. What should you do now?
- A. Tell the user the computer is fixed and leave.
  - B. Invite the user to sit down and use the computer to make sure the problem is completely gone from the user's perspective.
  - C. Tell the user the machine is fixed, go back to your office, and document the problem.
  - D. As you leave for the tenth time, complain to the user that you are tired of always fixing his computer.
12. Which of the following makes a good field replaceable unit?
- A. Video card
  - B. 20-inch CRT monitor
  - C. Set of 2.1 speakers
  - D. Printer
13. After replacing a keyboard a user has spilled coffee on for the fifth time, what should you say to the user?
- A. I can't guarantee the new keyboard will work if it gets dirty.
  - B. I can't guarantee the new keyboard will work if you continue to spill coffee on it.
  - C. These keyboards are expensive. Next time we replace one because you spilled coffee, it's coming out of your paycheck.
  - D. You need to be more careful with your coffee.
14. When is it appropriate to yell at a user?
- A. When he screws up the second time
  - B. When he interrupts your troubleshooting
  - C. When he screws up the fifth time
  - D. Never
15. Once you figure out what can be causing a computer to malfunction, what's your next step?
- A. Escalate the problem to a higher-level tech.
  - B. Talk to the user about stream loading and other geeky things because your knowledge will put him or her at ease.
  - C. Test your theory, starting with the obvious.
  - D. Write an incident report to document the problem.

## ■ Essay Quiz

1. A friend is considering turning his computer hobby into a career and has asked your advice on outfitting himself as a freelance computer technician. What tools can you recommend to your friend?
2. A user phones you at your desk and reports that after pressing the power button on his computer and hearing the hard drive spin up, his screen remains blank. What questions can you ask to determine the problem? Remember, avoid an accusing tone.
3. Briefly explain the various steps in troubleshooting theory.

## Lab Projects

- **Lab Project 32.1**

Think of items you would like to always have on hand as FRUs. Using the Internet, find prices for these items. Make a list of your items and their

individual costs; then find the total cost for your equipment.

- **Lab Project 32.2**

Visit your local computer store or hardware store and purchase the items for a hardware tech toolkit.

You may want to include a variety of screwdrivers, an anti-static wrist strap, tweezers, or other items.

- **Lab Project 32.3**

Create a software tech toolkit on an optical disc or USB flash drive loaded with a variety of drivers for NICs and video cards. Include free/open-source

anti-virus software, anti-spyware software, and any other software tools you think might be useful.